



# GRACE CHILDREN'S FOUNDATION

Children's Resource Exchange

---

Accelerating Access To Pediatric Healthcare  
Resources For Children In Need Globally





# THE MISSION



Established in 1997, the Grace Children's Foundation (GCF) is a New York City based 501(c)(3) nonprofit organization dedicated to improving lives through its Children's Resource Exchange (CRE) model—connecting children in need with medical professionals and essential nonclinical resources.

# THE CRITICAL PROBLEM

- An estimated 1.7 billion children and adolescents worldwide did not have access to surgical care \*
- The number of children with disabilities globally is estimated at almost 240 million\*\*
- Children are dying and relegated to the periphery of society in the time it takes to connect them to existing resources necessary for their well being
- This research highlights the pressing need to develop "targeted solutions" to address these inequities.

There has been no socially impactful initiative to systematize and coordinate medical care and nonclinical resources for children with disabilities

...Until Now

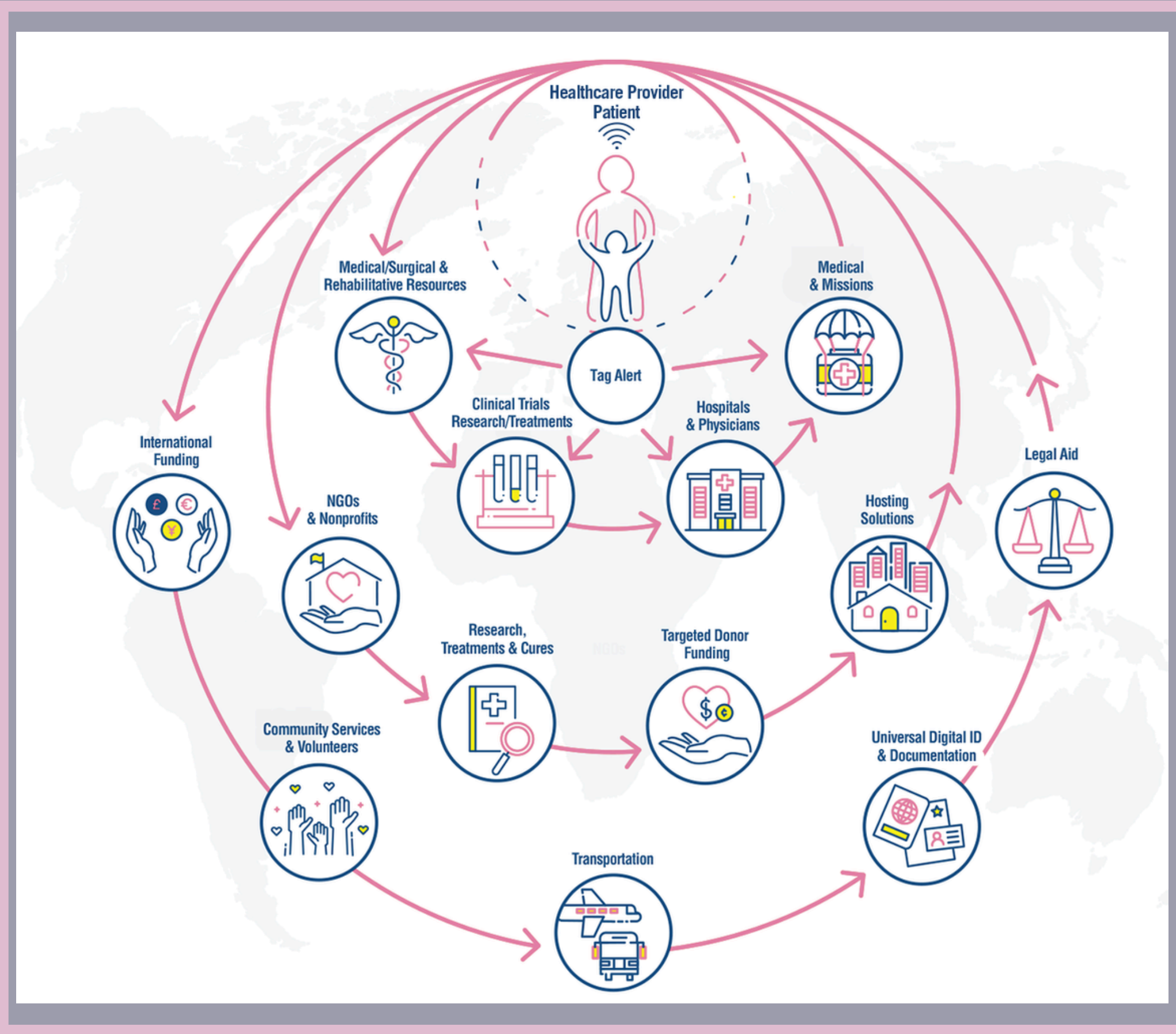
\*World Health Organization - 2019

\*\*UNICEF- 2021

# Children's Resource Exchange



GCF's Children's Resource Exchange (CRE) digital platform will expedite the coordination of resources for children suffering from debilitating but treatable diseases, medical conditions, traumatic injuries, congenital birth anomalies and mental health conditions matching them with pediatric specialties and other social determinants of health essential for their wellbeing.



[Please Visit CRE Strategy Document](#)



# SCALING THE SOLUTION

GCF is working with a dedicated team of innovators at Microsoft, collaborating with Microsoft Tech for SocialImpact/Microsoft Philanthropies, to evolve its manual process into the CRE digital platform.

The Foundation is enriching its database through network outreach and call to action campaigns with WebMD/Medscape Pediatrics as the CRE technology aggregates medical and essential non-clinical resources to bridge the gap between children in need and people and organizations ready to help

---

[Please Visit the Partners in Healing Page](#)

# THE STRATEGY

## Combining Human Conscientiousness With Technology



---

In time, as case information increases, AI automated processes will be able to analyze the needs of children, find patterns across similar past cases, summarize each child's story and target messages to particular pediatric specialists, ultimately aiding physicians in providing diagnostics and treatments, all within a secure compliant platform.

These automated processes will be accelerated through the use of generative AI (GenAI) in the initial version of the application and ultimately the processes themselves can be orchestrated by Agentic AI. In these future processes, AI agents will play general orchestration roles (e.g. working tirelessly to perform deep research on child's case and then outlining the steps that need to be taken to help them). Then, more specialized agent roles will take on specific laborious tasks and other steps to help with each component of a child's case.

Relationship building with children, caregivers and partners-in-healing will continue to be critical to the function of these technologies, even as they scale the manual steps within the processes.

**The CRE service will be the go-to resource for pediatric healthcare  
—dedicated to the children who wait...**

# Physician Video Testimonials

Future Teacher Chunlan



Future Veterinarian Mia



Future Doctor Quy



Future Doctor Roddy



GCF Board  
Emeritus  
[Steve Lee MD](#)

-

GCF Medical  
Advisor  
[Hannah Famiglietti](#)  
MD\_

GCF Trustee  
[Kris Mahadeo](#)  
MD/MPH

GCF Trustee  
[Silvio Podda](#)  
MD\_

Please click the links above to hear from physicians who helped to rejuvenate the lives of these children through the CRE model

# THE CURRENT PROCESS

## Case-by-Case Model



This model is applied to each child on a case-by-case basis. While expanding our outreach globally, GCF works alongside those people and organizations with a long-term vision and commitment to investing in a sustainable, replicable model of healing for children in need through GCF's Children's Resource Exchange (CRE) platform.

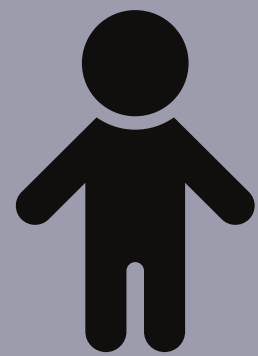




# Current Case-by-Case Impact: How GCF Changes Lives

## Impact Overview:

GCF's impact is demonstrated by its success in coordinating pro bono and subsidized care for children with a wide range of medical issues on a case-by-case basis for almost three decades. Each child presented unique complexities. The majority were left without reliable access to resources required for their wellbeing until they were connected to people and organizations through the CRE model.



300+ Children



60+ Hospitals & Clinics



60+ NGO's, Nonprofits & Family  
Foundations



21 Countries



100+ Physicians,  
Patient Care  
Coordinators/Admin

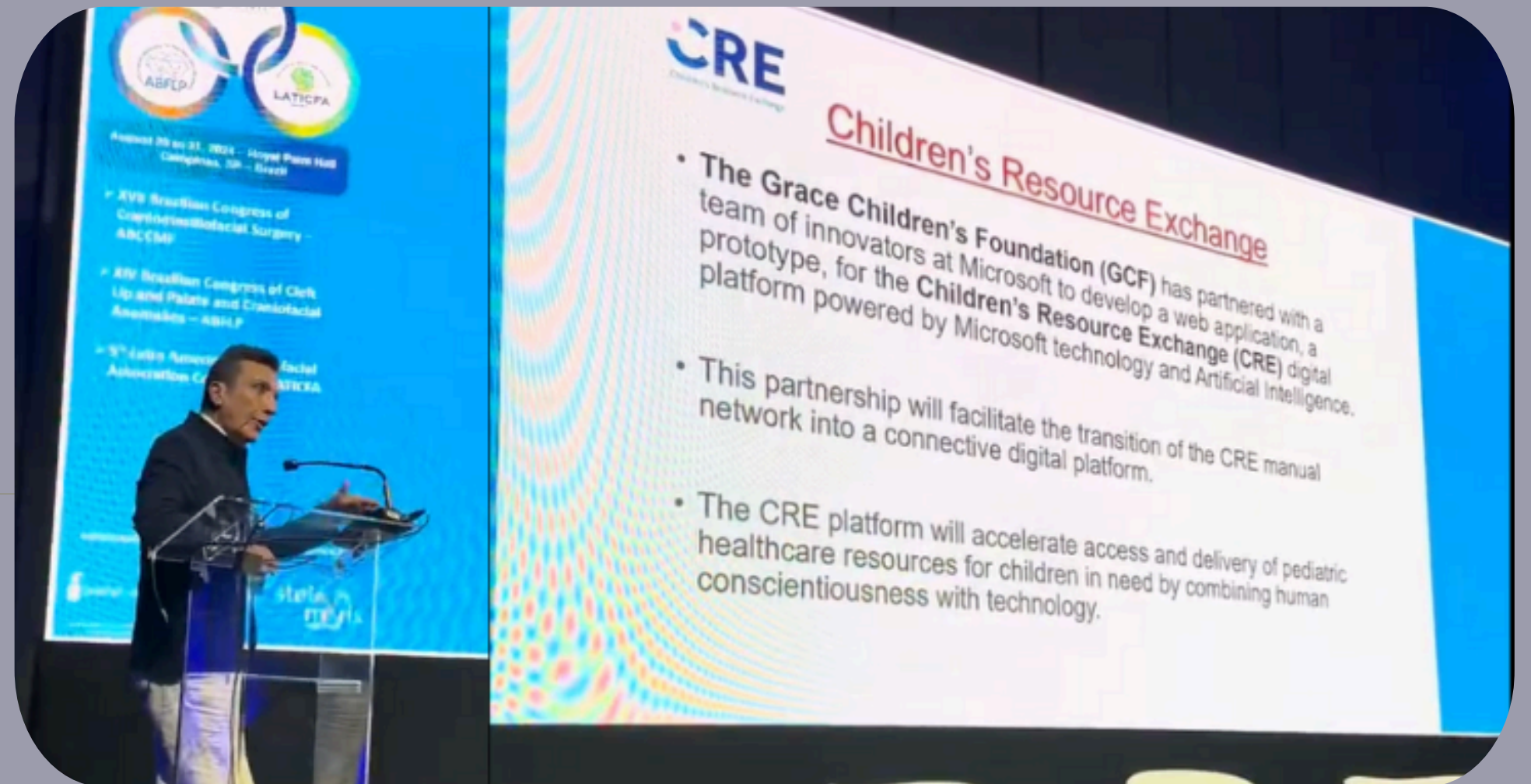


10M+ USD Donated Services

# The CRE: A Global Game-Changer in Pediatric Healthcare

Presenting the CRE at the *Past and Future of Medical Missions Conference*, Dr. Podda shared the story of Rodwell which was met by an overwhelming response from those in plastic surgery, as physicians and human beings.

*“...They were, across the board, so enthusiastic about the prospect of the CRE i.e. asking when they can start using this platform. People were literally fascinated by the CRE global implications and how much of a game-changer the platform could be for the health of innumerable children.”*



Dr. Silvio Podda, Chief of Plastic Surgery St. Joseph's University Medical Center, GCF Trustee, Committee Head of Global Health and Medical Missions, American Society of Plastic Surgery



## Sending Love through the Children's Resource Exchange

Dear Children,

Whether you need a hug, a pair of shoes, clean water, food, shelter, education or medical care or if you are just feeling alone, please know that there are so many people who love you in this world and are working every day to help you. No matter where your paths leads, you can carry this love with you for a lifetime, far beyond and over the rainbow—dedicated to all the children who wait.

- Nancy & Brooks Robertson

[Click here to hear a Gift from Yo-Yo Ma  
To All the Children in the World](#)

Often, we don't stop to realize what we can do for each other with the simplest gesture. Please consider how you might help on this incredible journey. Please help us to help the children who wait.

